

# Montana Pesticide Stewardship Partnership Program

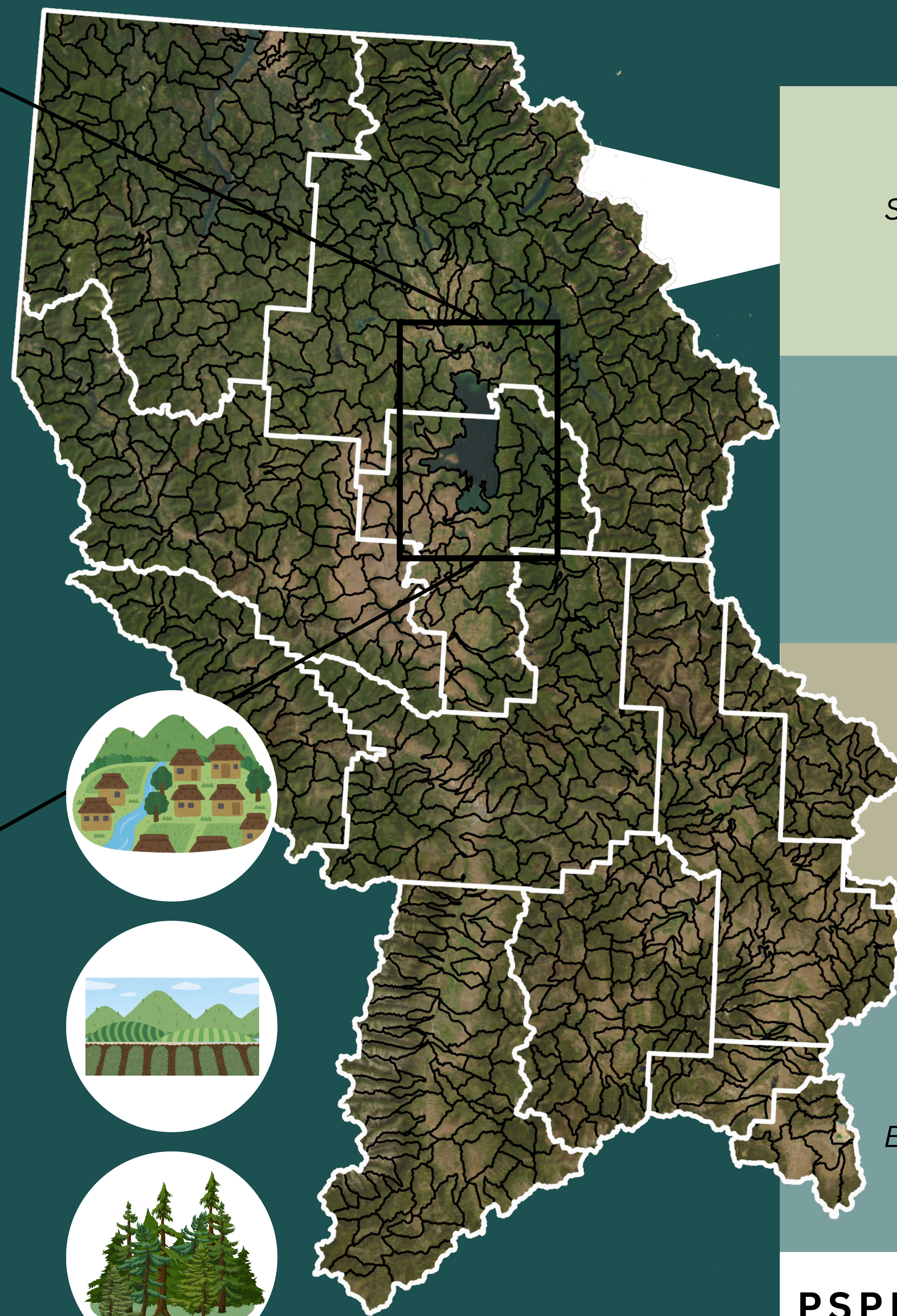
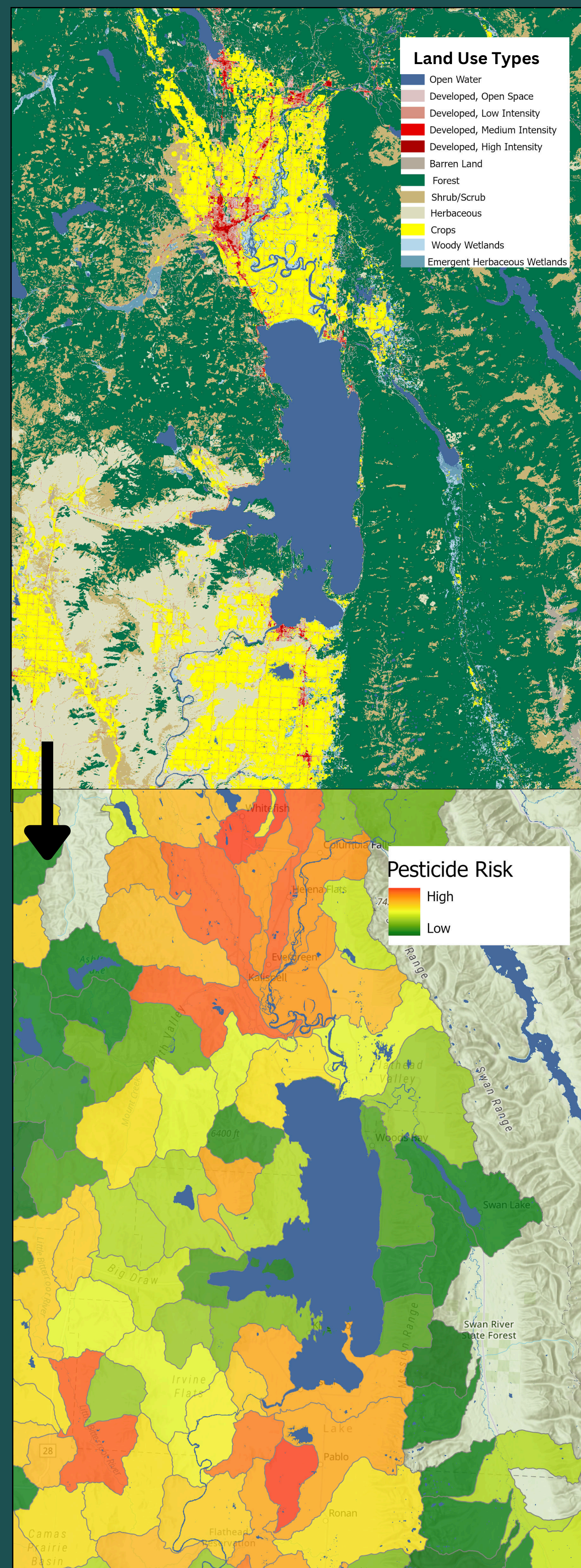


A collaborative network supporting efforts to improve water quality and engage communities in the Upper Columbia River Basin of Montana.

Dr. Rachel Malison, Principal Investigator

Janelle Groff, Research Coordinator

Supported by Big Sky Watershed Corps Member - Jared Glass (2024)



Columbia River Basin  
*Spatial Analysis of Pesticide Use:*  
Agriculture, Urban, Forest,  
Discrete Land Uses

Watersheds  
*Plan and Conduct Monitoring*  
Surface Water, Groundwater,  
Fish and Food Web Samples

EPA Priorities  
*Green Infrastructure,  
Agricultural BMPs,  
Community Education,  
Human Health Impacts*

Outputs  
*Data Analysis, Online Portal,  
Education, Pesticide Reductions  
and Improved Water Quality*

## PSPP Network Engagement & Communication

State, Federal, & Tribal Entities, Partners, Watershed Groups, Educators, Homeowners, Farmers, Gardeners, Foresters, and more...

PSPP Network Engagement & Communication



## Subaward Recipients

### Montana Department of Agriculture

- Waste Pesticide Disposal Program
- Pesticide Container Recycling Program
- Groundwater Protection Program



### Montana Department of Environmental Quality

- Education + Outreach
- Native Plants & Buffers



### Montana Watershed Coordination Council

- New Connections/Network Support
- Education + Outreach



### Montana State University Extension

- Pesticide Leaching/Lysimeter Research
- Pesticide Education Program



### Kootenai Tribe of Idaho

### Confederated Salish & Kootenai Tribes

- Fish Tissue + Food Web Analysis



### City of Missoula

- Green Stormwater Infrastructure



EPA Toxic Reduction Lead Grant for the Columbia River Basin Restoration Program  
Grant #96888201



Website  
MTPSPPP@flbs.umt.edu

Newsletter