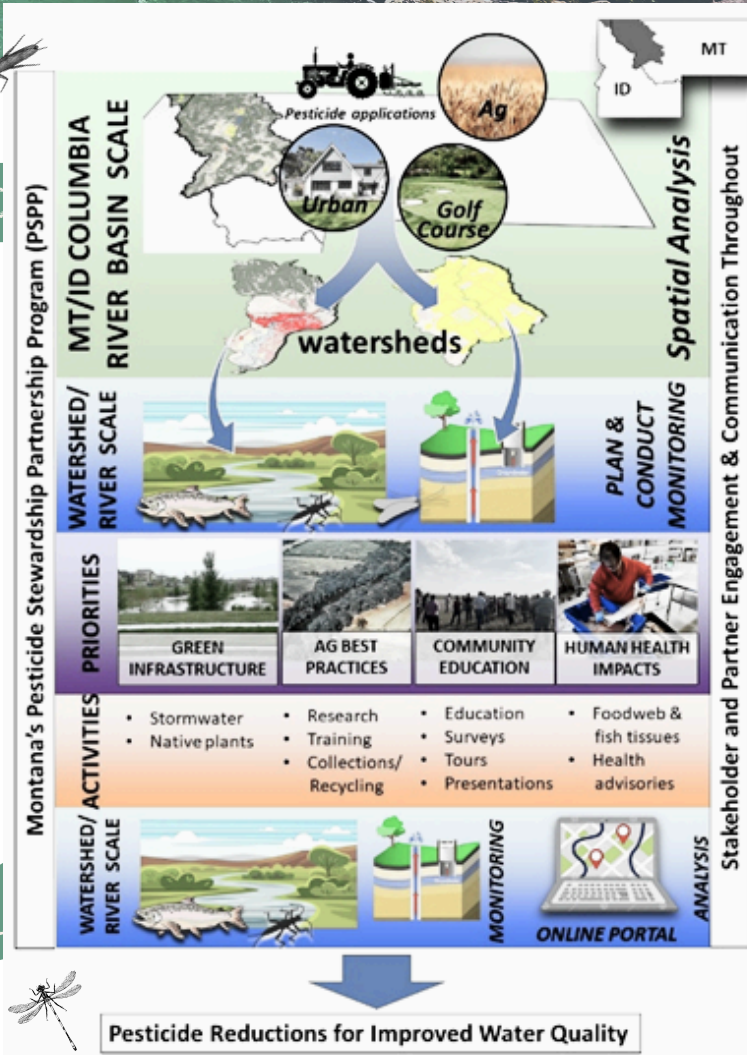


About the MT PSPP



In 2023, the EPA awarded the University of Montana \$6.6 million to establish a new collaborative Montana Pesticide Stewardship Partnership Program (MT PSPP), based at the Flathead Lake Biological Station. The program aims to have an impact on the health and water quality of the Upper Columbia River Basin, recognizing that protecting the water upstream will have a lasting effect downstream. The ultimate goal is to create a robust network of organizations, stakeholder groups, and individuals that can engage and work together to protect our waters. The MT PSPP is led by Principle Investigator Dr. Rachel Malison, assisted by Research Coordinator Janelle Groff and Big Sky Watershed Corps member Jared Glass (2024 term).



If you'd like to learn more, contact us at MTPSPP@flbs.umt.edu. Whether you have experience in water quality monitoring; or, if this program sparks a new interest, we have opportunities for collaboration and are always looking for new ideas to improve our efforts.

[Join our Newsletter](#)



[Visit our Website](#)



**FLATHEAD LAKE
BIO STATION**
UNIVERSITY OF MONTANA