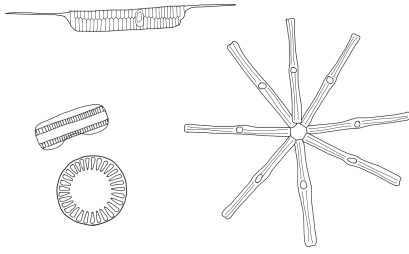


Food Web Challenge

Food Web Cards

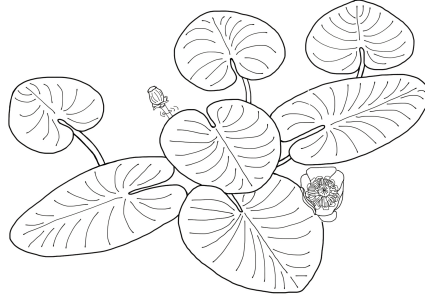
Student Activity Cards (1 of 3)



Phytoplankton

I am a diatom (microscopic algae) that floats and drifts with the water currents.

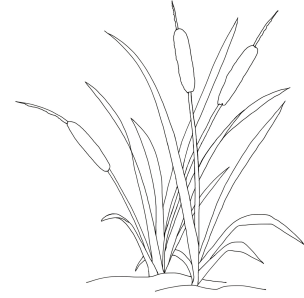
I use sunlight, water, and carbon dioxide to build sugar for myself through photosynthesis.



Yellow Pond Lily

I grow in wetland areas and use my wide leaves to capture sunlight.

I use sunlight, water, and carbon dioxide to build sugar for myself through photosynthesis.



Broadleaf Cattail

I grow in wetland areas. I provide nesting areas for many birds.

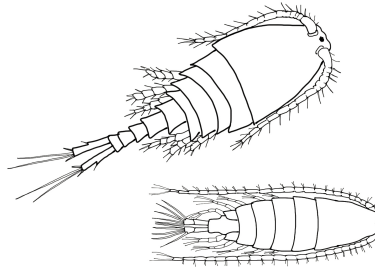
I use sunlight, water, and carbon dioxide to build sugar for myself through photosynthesis.



Periphyton

I am the slimy microscopic algae that grows on the bottom of the lakes, streams, rivers, and wetland areas.

I use sunlight, water, and carbon dioxide to build sugar for myself through photosynthesis.



Copepods - Zooplankton

I am a small crustacean that lives in lakes, ponds streams, rivers, and wetland areas. You need to use a microscope to see me.

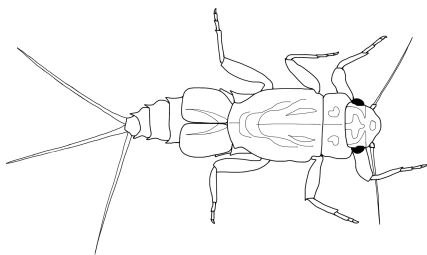
I mostly eat phytoplankton and bacteria.



Cladocerans - Zooplankton

I am often called a "water flea." I live in lakes, ponds, streams, rivers, and wetland areas. You need to use a microscope to see me.

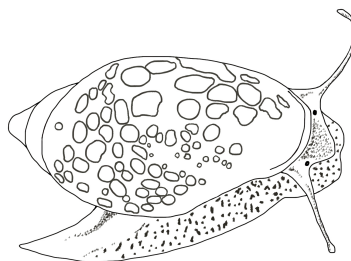
I mostly eat phytoplankton and bacteria.



Mayfly Larvae/Nymph

I am an aquatic insect that usually lives along the bottom of lakes, streams, and rivers. I will soon turn into a flying adult mayfly.

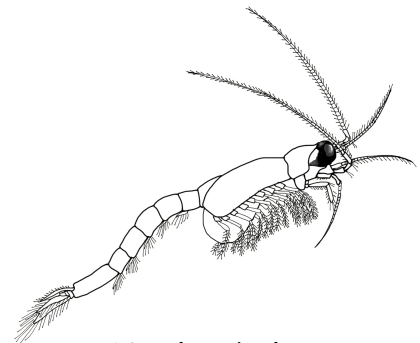
I eat periphyton and bacteria off of rocks, sand, and wood.



Tadpole Snail

I live along the bottom of fresh water lakes, ponds, streams, rivers, and wetland areas.

I eat periphyton, bacteria, and decaying plants and animals found on rocks, sand, and wood.



Mysis Shrimp

I live in deep, cold lakes. I hide in the deep water during the day and swim up to the surface to eat at night.

I eat zooplankton.



**FLATHEAD LAKE
BIO STATION**
UNIVERSITY OF MONTANA

© 2019 AIS unit created by the Flathead Lake Biological Station and the Flathead Lakers and funded by the Montana Department of Natural Resources and Conservation and FLBS



Food Web Challenge

Food Web Challenge



Food Web Challenge



Food Web Challenge



Food Web Challenge



Food Web Challenge



Food Web Challenge



Food Web Challenge



Food Web Challenge



Food Web Challenge



**FLATHEAD LAKE
BIO STATION**
UNIVERSITY OF MONTANA

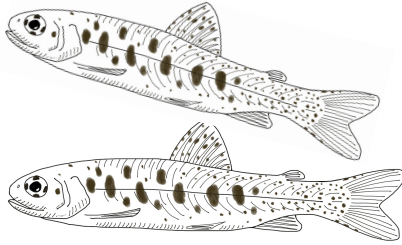
© 2019 AIS unit created by the Flathead Lake Biological Station and the Flathead Lakers
and funded by the Montana Department of Natural Resources and Conservation and FLBS



Food Web Challenge

Food Web Cards

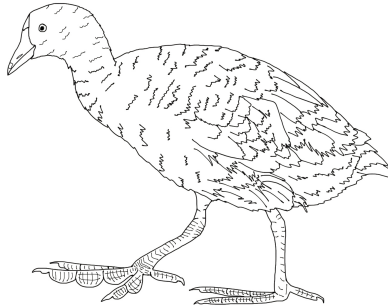
Student Activity Cards (2 of 3)



Juvenile Trout

I live in lakes, stream and rivers. I like to hide in the pools and side channels of rivers and streams.

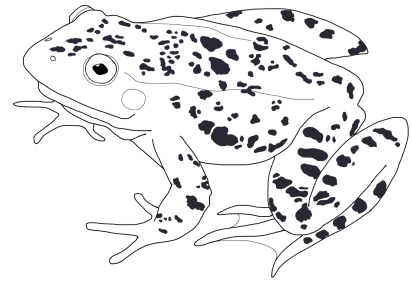
I eat aquatic insect larvae, baby fish, and zooplankton.



American Coot

I am a swimming bird found in large groups in lakes, ponds, and wetlands.

I eat algae, pond lilies, duckweed, wild celery, eelgrass, sedges, hydrilla, cattail seeds, and water milfoil.



Columbia Spotted Frog

I live in lakes, ponds, wetlands, streams, and rivers. I often hide in aquatic plants to avoid predators.

I eat snails, mussels, spiders, insect larvae, adult insects, & crustaceans.



Zebra Mussel

I attach to any hard surface in slow-moving lakes, ponds, streams, rivers, and wetlands. I'm not native to the United States.

I filter water to eat phytoplankton, bacteria, and small zooplankton.



Canada Goose

I can be found near water, grassy fields, and grain fields.

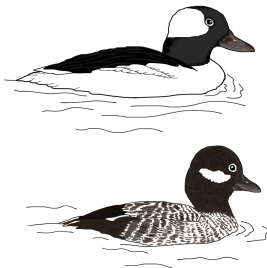
I eat grasses and sedges in the spring and summer. I eat cattail seeds, grain seeds, and berries during the fall and winter.



Great Blue Heron

I hunt along the shores of lakes, ponds, streams, rivers, and wetlands.

I eat fish, frogs, turtles, young birds, bird eggs, snakes, insects, and small mammals.



Bufflehead Duck

I dive for food in lakes, ponds, and wetland areas.

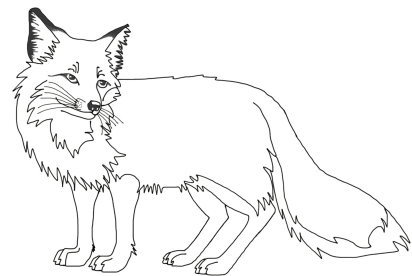
I eat aquatic insect larvae, juvenile fish, crustaceans, snails, mussels, as well as, seeds from pondweed, bulrush, and slough grass.



Red-tailed Hawk

I hunt in open fields, grasslands, parks, and scrublands. I often look for food from high electrical poles.

I eat mostly birds, small mammals, and snakes.



Red Fox

I live in a den or burrow in the ground in forested areas, mountains, and grasslands.

I eat birds, fish, insects, small mammals, and fruits.



**FLATHEAD LAKE
BIO STATION**
UNIVERSITY OF MONTANA

© 2019 AIS unit created by the Flathead Lake Biological Station and the Flathead Lakers and funded by the Montana Department of Natural Resources and Conservation and FLBS



Food Web Challenge

Food Web Challenge



Food Web Challenge



Food Web Challenge



Food Web Challenge



Food Web Challenge



Food Web Challenge



Food Web Challenge



Food Web Challenge



Food Web Challenge



**FLATHEAD LAKE
BIO STATION**
UNIVERSITY OF MONTANA

© 2019 AIS unit created by the Flathead Lake Biological Station and the Flathead Lakers
and funded by the Montana Department of Natural Resources and Conservation and FLBS



Food Web Challenge

Food Web Cards

Student Activity Cards (3 of 3)



Osprey

I hunt in fish-filled lakes, ponds, streams, rivers, and wetlands. I like to build my nest on high man-made structures.

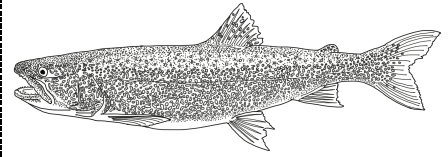
I dive into the water to catch fish.



Bald Eagle

I nest in forested areas near large lakes and rivers. I often soar in the sky to search for my food.

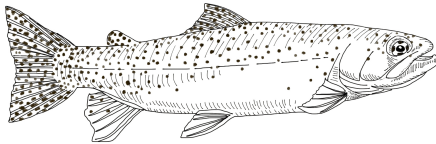
I eat fish, mammals, birds, frogs, snakes, lizards, and dead animals.



Lake Trout

I live in the cold, clear water of deep lakes and rivers.

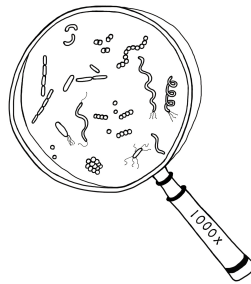
I eat large zooplankton, such as *Mysis* shrimp when I am young and other fish when I get bigger.



Adult Westslope Cutthroat Trout

I live in the cold, clear water of lakes, streams, and rivers.

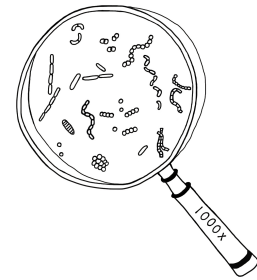
I eat aquatic insects and smaller fish.



Bacteria

I can drift as microscopic plankton in lakes, rivers, or wetlands or grow on surfaces.

I eat and decompose material from living and/or dead organisms.



Cyanobacteria

I can drift as microscopic plankton in lakes, rivers, or wetlands or grow on surfaces.

I use sunlight, water, and carbon dioxide to build sugar for myself through photosynthesis.



FLATHEAD LAKE
BIO STATION
UNIVERSITY OF MONTANA

© 2019 AIS unit created by the Flathead Lake Biological Station and the Flathead Lakers and funded by the Montana Department of Natural Resources and Conservation and FLBS



Food Web Challenge

Food Web Challenge



Food Web Challenge



Food Web Challenge



Food Web Challenge



Food Web Challenge



Food Web Challenge



**FLATHEAD LAKE
BIO STATION**
UNIVERSITY OF MONTANA

© 2019 AIS unit created by the Flathead Lake Biological Station and the Flathead Lakers
and funded by the Montana Department of Natural Resources and Conservation and FLBS

