

# Summer Session 2015

at the University of Montana's  
**Flathead Lake Biological Station**

Join us for our 116th year!  
 June 15 – August 7



*Field Ecology students in Glacier National Park*



*Stream Ecology students snorkel at Nyack research site*

*Consider taking an academic adventure to the Crown of the Continent in northwest Montana for a phenomenal field ecology experience in a truly spectacular natural setting!*

***We emphasize hands-on learning outside under the open sky.***

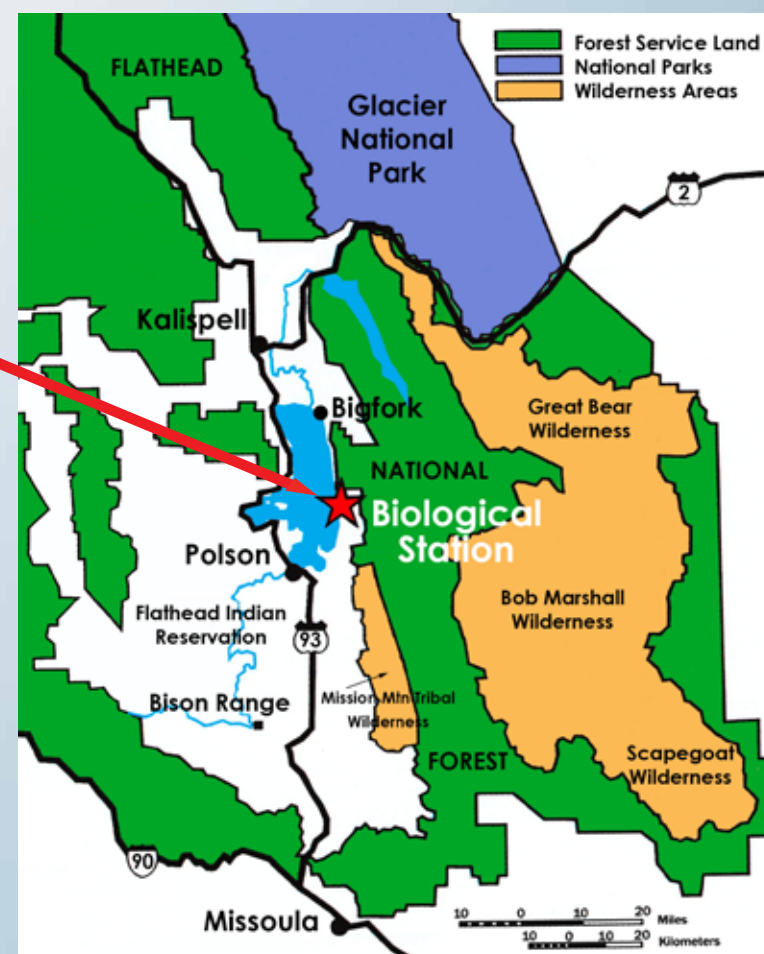
The **Flathead Lake Biological Station** (FLBS) is a University of Montana Center of Excellence and offers an outstanding summer academic program for advanced undergraduate and graduate students. Researchers and students study together on the shores of Flathead Lake, 85 miles north of Missoula, Montana. Hiking, boating and outdoor scholarly fun are an everyday part of these novel courses.

**Courses** completed at FLBS substitute for required or elective courses and are transferable to most universities. Each course involves field trips to relevant sites including Glacier National Park, the National Bison Range and other locations in the Flathead Basin. Prerequisites are required for all courses.

**Scholarships are available from \$500 up to \$4,000.**

**REGISTRATION**—For complete information, simply go to the FLBS website at <http://flbs.umt.edu/summer> or contact us by email at [flbs@flbs.umt.edu](mailto:flbs@flbs.umt.edu).

June 15–June 26	June 29–July 10	July 13–July 24	July 27–August 7
Field Ecology (BIOE 342)			
Conservation Ecology (BIOE 440)	Landscape Ecology (BIOE 451)	Stream Ecology (BIOE 439)	Lake Ecology (BIOE 453)
Seminars in Ecology & Resource Management (BIOB 494)		Ecology of Forests & Grasslands (BIOE 458)	Alpine Ecology (BIOE 416)



Flathead Lake Biological Station, University of Montana  
 32125 Bio Station Lane, Polson, MT 59860-6815 USA  
 Ph.: 406.982.3301 Fax: 406.982.3201 Email: [flbs@flbs.umt.edu](mailto:flbs@flbs.umt.edu)  
 Web: <http://flbs.umt.edu> [www.facebook.com/umflbs](http://www.facebook.com/umflbs)  
 Webcams: <http://flbs.umt.edu/webcams>