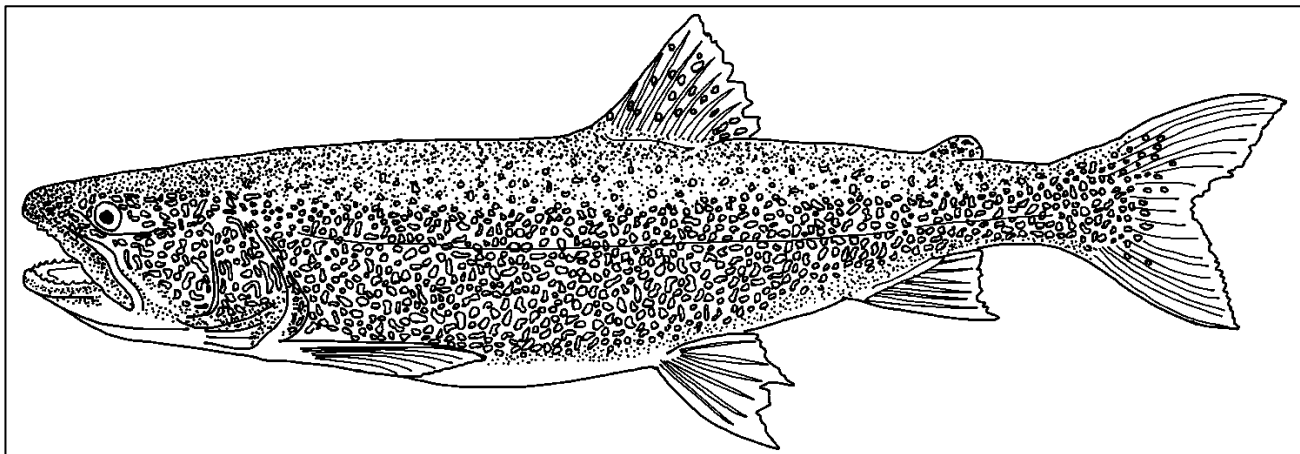
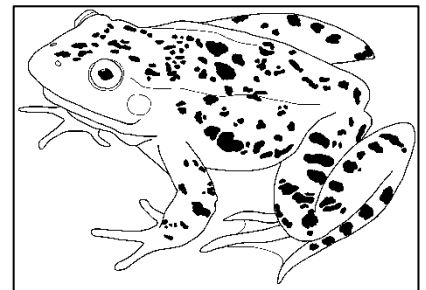
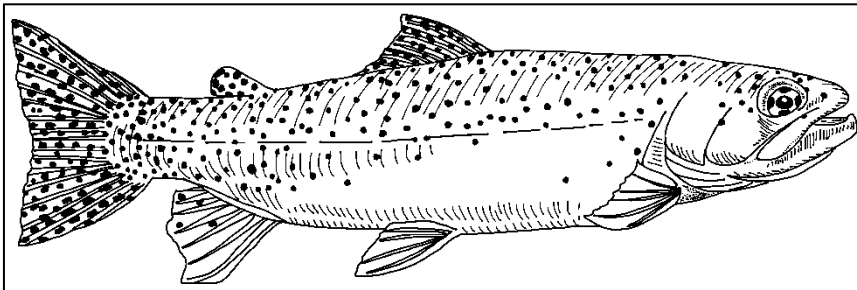
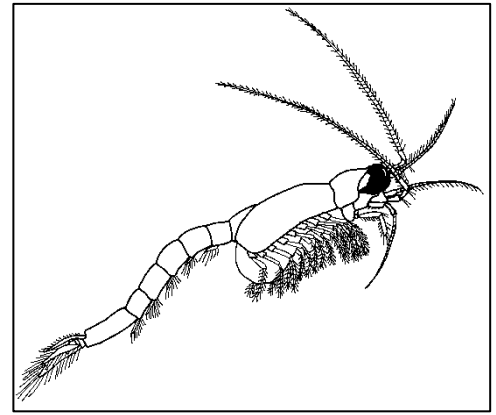
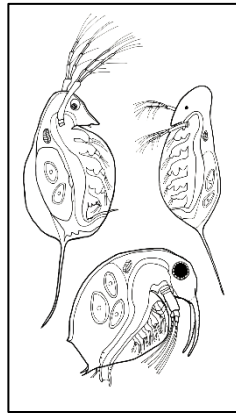
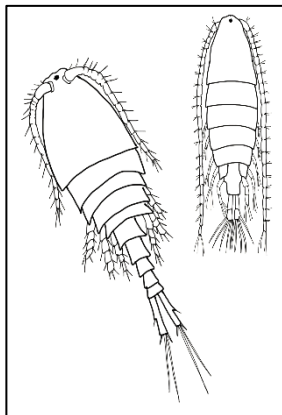
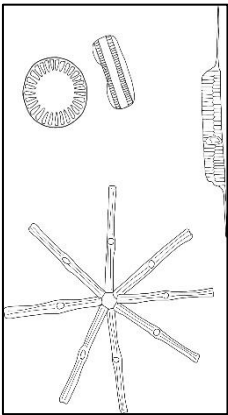




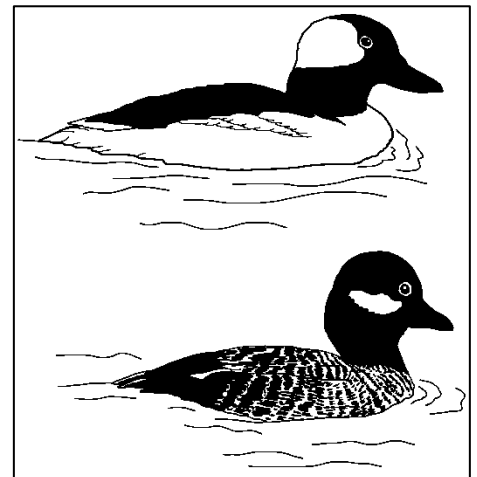
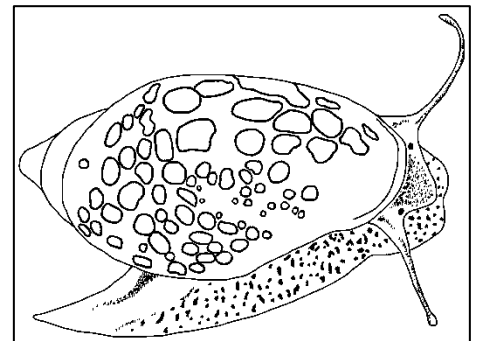
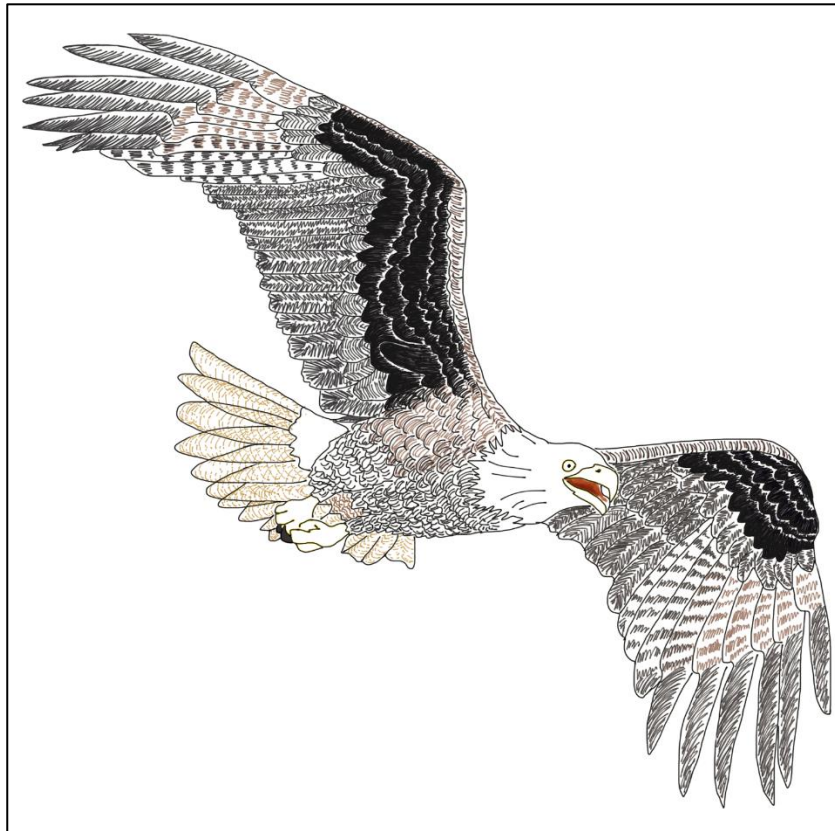
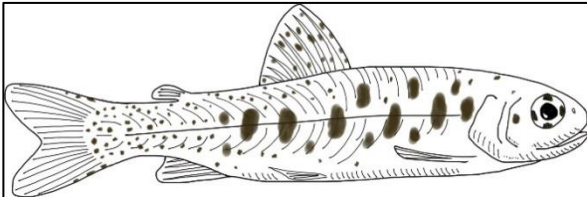
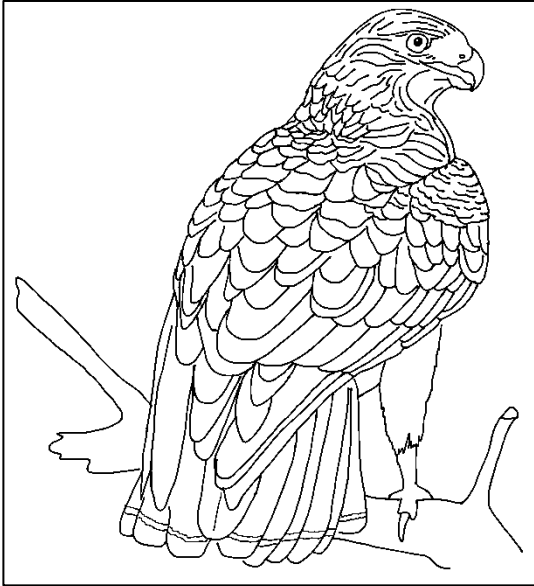
Build a Food Web Poster (Grades 6-12) Instructions

1. Cut out the **organisms** and descriptions. Match each organism with the description that fits.
2. Arrange the organisms on a large piece of paper (poster size) to build a **food web**. Remember each **food chain** in the web should start with a **producer**. So place your producers at the bottom.
3. Glue the organisms and descriptions to the poster and use a marker to draw arrows between the organisms (the arrows should flow UP through the web).
4. Label whether each organism is a **producer**, **herbivore**, **omnivore**, or **carnivore**.
5. Check out the answer to key for our example of a food web (yours might look different).



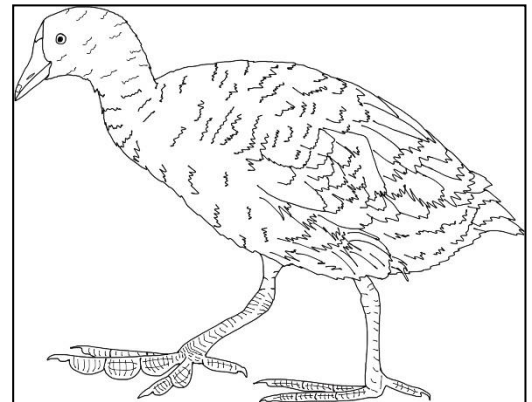
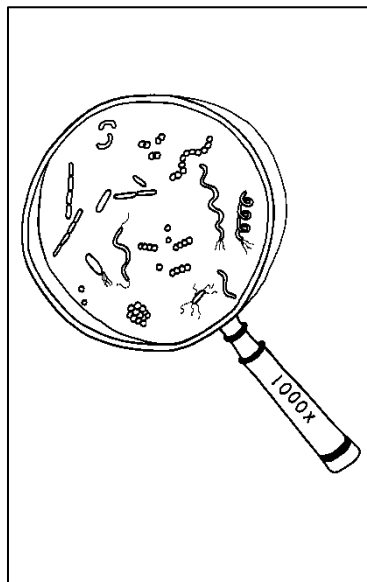
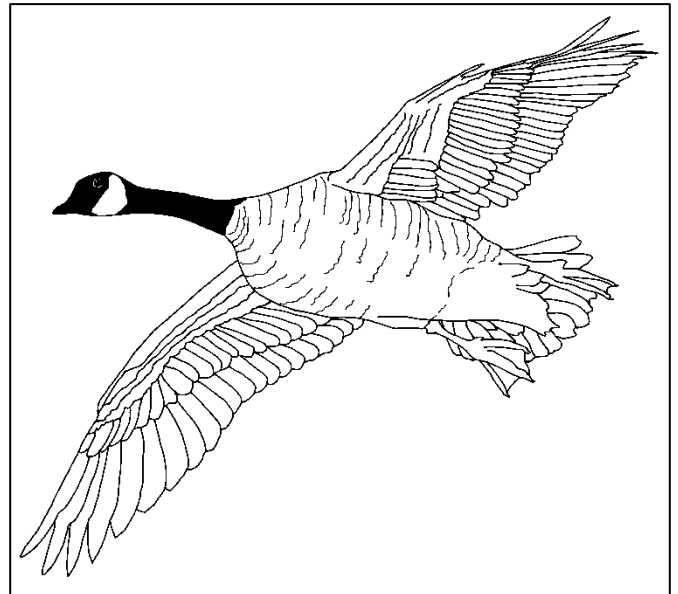
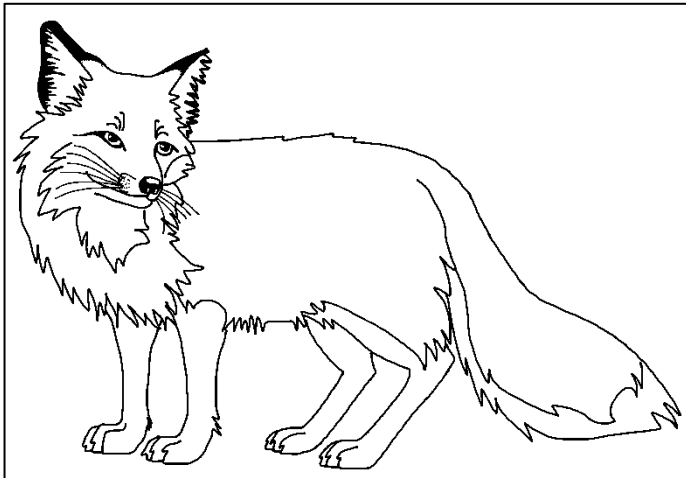
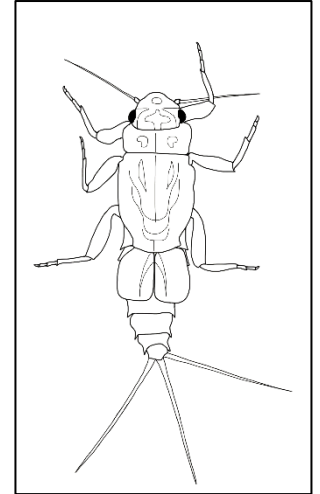
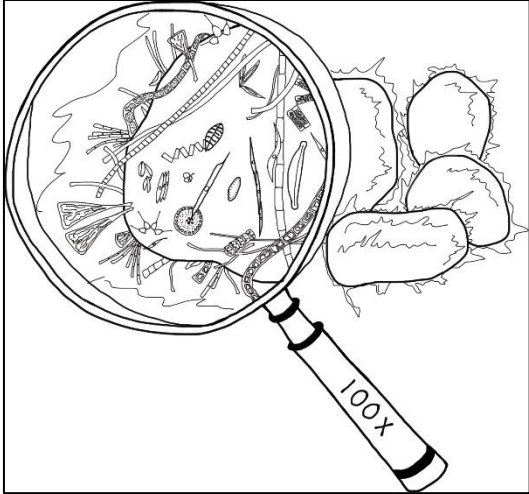


Virtual Research Cruise: Sampling Zooplankton Food Web Activity (Grades 6-12)





Virtual Research Cruise: Sampling Zooplankton Food Web Activity (Grades 6-12)





Virtual Research Cruise: Sampling Zooplankton Food Web Activity (Grades 6-12)

<p>Phytoplankton</p> <p>I am a diatom (microscopic algae) that floats and drifts with the water currents.</p> <p>I use sunlight, water, and carbon dioxide to build sugar for myself through photosynthesis.</p>	<p>Periphyton</p> <p>I am the slimy microscopic algae that grows on the bottom of lakes, streams, rivers, and wetland areas.</p> <p>I use sunlight, water, and carbon dioxide to build sugar for myself through photosynthesis.</p>
<p>Broadleaf Cattail</p> <p>I grow in wetland areas. I provide nesting areas for many birds.</p> <p>I use sunlight, water, and carbon dioxide to build sugar for myself through photosynthesis.</p>	<p>Tadpole Snail</p> <p>I live along the bottom of freshwater lakes, ponds, streams, rivers, and wetland areas.</p> <p>I eat periphyton and decaying plants and animals found on rocks, sand, and wood.</p>
<p>Copepods - Zooplankton</p> <p>I am a small crustacean that lives in lakes, ponds, streams, rivers, and wetland areas. You need to use a microscope to see me.</p> <p>I mostly eat phytoplankton and bacteria.</p>	<p>Cladocerans - Zooplankton</p> <p>I am often called a “water flea.” I live in lakes, ponds, streams, rivers, and wetland areas. You need to use a microscope to see me.</p> <p>I mostly eat phytoplankton and bacteria.</p>
<p>Canada Goose</p> <p>I can be found near water, grassy fields, and grain fields.</p> <p>I eat grasses and sedges in the spring and summer. I eat cattail seeds, grain seeds, and berries during the fall and winter.</p>	<p>American Coot</p> <p>I am a swimming bird found in large groups in lakes, ponds, and wetlands.</p> <p>I eat algae, pond lilies, duckweed, wild celery, eelgrass, sedges, hydrilla, cattail seeds, and water milfoil.</p>
<p>Mayfly Larvae/Nymph</p> <p>I am an aquatic insect that usually lives along the bottom of lakes, streams, and rivers. I will soon turn into a flying adult mayfly.</p> <p>I eat periphyton off of rocks, sand, and wood.</p>	<p>Juvenile Trout</p> <p>I live in lakes, streams, and rivers. I like to hide in the pools and side channels of rivers and streams.</p> <p>I eat aquatic insect larvae, baby fish, and small zooplankton.</p>
<p>Great Blue Heron</p> <p>I hunt along the shores of lakes, ponds, streams, rivers, and wetlands.</p> <p>I eat fish, frogs, turtles, young birds, bird eggs, snakes, insects, and small mammals.</p>	<p>Red-tailed Hawk</p> <p>I hunt in open fields, grasslands, parks, and scrublands. I often look for food from high electrical poles.</p> <p>I eat mostly birds, small mammals, and snakes.</p>



Virtual Research Cruise: Sampling Zooplankton Food Web Activity (Grades 6-12)

<p>Bufflehead Duck</p> <p>I dive for food in lakes, ponds, and wetland areas.</p> <p>I eat aquatic insect larvae, juvenile fish, crustaceans, snails, mussels, as well as, seeds from pondweed, bulrush, and slough grass.</p>	<p>Columbia Spotted Frog</p> <p>I live in lakes, ponds, wetlands, streams, and rivers. I often hide in aquatic plants to avoid predators.</p> <p>I eat snails, mussels, spiders, insect larvae, adult insects, & crustaceans.</p>
<p>Lake Trout</p> <p>I live in the cold, clear water of deep lakes and rivers.</p> <p>I eat large zooplankton, such as <i>Mysis</i> shrimp when I am young and other fish when I get bigger.</p>	<p>Adult Westslope Cutthroat Trout</p> <p>I live in the cold, clear water of lakes, streams, and rivers.</p> <p>I eat aquatic insects and smaller fish.</p>
<p>Bacteria</p> <p>I can be found in every habitat on Earth and on any living and/or non-living surface.</p> <p>I eat material from living and/or dead organisms.</p>	<p>Red Fox</p> <p>I live in a den or burrow in the ground in forested areas, mountains, and grasslands.</p> <p>I eat birds, fish, insects, small mammals, and fruits.</p>
<p>Osprey</p> <p>I hunt in fish-filled lakes, ponds, streams, rivers, and wetlands. I like to build my nest on high man-made structures.</p> <p>I dive into the water to catch fish.</p>	<p>Bald Eagle</p> <p>I nest in forested areas near large lakes and rivers. I often soar in the sky to search for my food.</p> <p>I eat fish, mammals, birds, frogs, snakes, lizards, and dead animals.</p>
<p><i>Mysis</i> Shrimp</p> <p>I live in deep, cold lakes. I hide in the deep water during the day and swim up to the surface to eat at night.</p> <p>I eat zooplankton.</p>	